

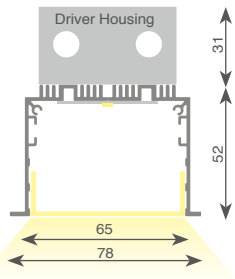
# LEDLiner65 Recessed

## Information

Recessed aluminium extruded profile 65x52mm. Strong attention is given to thermal management (reduction of heat), equal light distribution and glare reduction (Prismatic Optics).

LEDLiner65 Recessed offers the latest and best performing LED lighting technology using Philips LED Lines.

The polycarbonate cover can be set into 3 different positions: 10mm recessed or flush with the border of the profile.



## Possibilities

### Mounting:

- Recessed

### Modules:

- Linear LED modules - Down
- Bridgelux LED Downlight single/double

### Options/Accessories

- Prismatic cover (glare reduction)
- Emergency lighting (1Hr/3Hrs)
- Actilume daylight/presence sensor

5 Years **Philips** Warranty

## Index

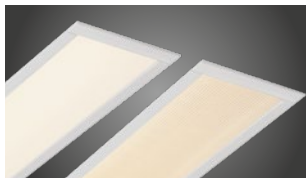
### Custom made:

- Basic components ..... p.141
- Spot-/Downlight modules ..... p.141
- Linear modules ..... p.143

### Ready to go:

- Down ..... p.162

Opal/Prismatic diffuser



PC in



PC flush



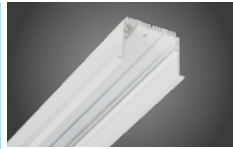
PC out



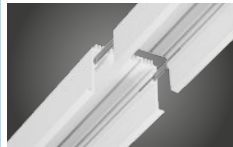
LEDLiner65 Recessed offers the possibility to place the polycarbonate cover in 3 different positions

# LEDLiner65 Recessed - Basic components

Profile housing



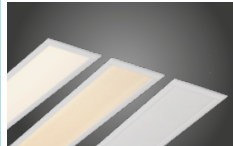
<b>Profile /meter</b>		
Aluminium Anodised		704.00.10
Matt White Texture		704.00.01
Matt Grey Texture		704.00.18
Matt Anthracite Texture		704.00.07
Matt Black Texture		704.00.03
Other RAL colors on request		



<b>Connector</b>		
90°		724.00.00
135°		732.00.00
180°		725.00.00
"T"		752.99.00
Custom made		723.00.00



<b>End cap (1 piece)</b>			
	<b>Standard</b>	<b>PC Out</b>	
Alu Anodised	706.00.10	710.00.10	
Matt White	706.00.01	710.00.01	
Matt Grey	706.00.18	710.00.18	
Matt Anthracite	706.00.07	710.00.07	
Matt Black	706.00.03	710.00.03	



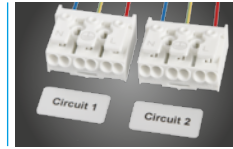
<b>LEDLiner65 Cover</b>		
<b>Per meter</b>		
Opal PC Cover		709.00.00
Prismatic PC cover		768.00.00
Alu Anodised		709.00.10
Matt White Texture		709.00.01
Matt Grey Texture		709.00.18
Matt Anthracite Texture		709.00.07
Matt Black Texture		709.00.03

Mounting



<b>Mounting Bracket</b>		707.00.00
0-2000mm: 2 brackets needed		
2000mm-3500mm: 3 brackets needed		
3500mm-4000mm: 4 brackets needed		

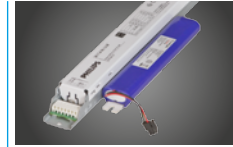
Electrical



<b>Extra circuit</b>	
<b>Per meter</b>	
Extra circuit /m	650.00.00

When multiple modules are used in one profile, modules can be switched individually using multiple circuits.  
Length of extra circuit equals the full length of the profile.

Extra



<b>Emergency module for Philips LED Line</b>	
1Hr emergency	659.00.LED-1
3Hrs emergency	659.00.LED-3
Info see p.207	



<b>Actilume daylight/presence detection</b>	
Actilume system	659.00.00
Daylight sensor with built-in presence detection. Only for linear Philips modules	



<b>Non dimmable downlight module</b>	
<b>475lm - 4.6W - 28° - 3000K - Ra80 - length:100mm</b>	
Aluminium Anodised	2003.24.830.10
Matt White Texture	2003.24.830.01
Matt Grey Texture	2003.24.830.18
Matt Anthracite Text.	2003.24.830.07
Matt Black Texture	2003.24.830.03



<b>Non dimmable twin downlight module</b>	
<b>(2x)475lm - 4.6W - 28° - 3000K - Ra80 - length:160mm</b>	
Aluminium Anodised	2004.24.830.10
Matt White Texture	2004.24.830.01
Matt Grey Texture	2004.24.830.18
Matt Anthracite Text.	2004.24.830.07
Matt Black Texture	2004.24.830.03



# LEDLiner65 Recessed - Linear modules

## Down module


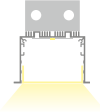
Philips Fortimo LED Line HV 1100lm/ft\*

			3000K Ra80 Opal diffuser	4000K Ra80 Opal diffuser	3000K Ra80 Prismatic diffuser	4000K Ra80 Prismatic diffuser	Length
 	<b>2200lm</b> 14.5W	Non dimmable 1-10V dimmable Touch/DALI dim.	2005.24.830.2200 2005.25.830.2200 2005.26.830.2200	2005.24.840.2200 2005.25.840.2200 2005.26.840.2200	2005.24.830.2200.P 2005.25.830.2200.P 2005.26.830.2200.P	2005.24.840.2200.P 2005.25.840.2200.P 2005.26.840.2200.P	563mm
	<b>3300lm</b> 21.7W	Non dimmable 1-10V dimmable Touch/DALI dim.	2005.24.830.3300 2005.25.830.3300 2005.26.830.3300	2005.24.840.3300 2005.25.840.3300 2005.26.840.3300	2005.24.830.3300.P 2005.25.830.3300.P 2005.26.830.3300.P	2005.24.840.3300.P 2005.25.840.3300.P 2005.26.840.3300.P	845mm
	<b>4400lm</b> 29W	Non dimmable 1-10V dimmable Touch/DALI dim.	2005.24.830.4400 2005.25.830.4400 2005.26.830.4400	2005.24.840.4400 2005.25.840.4400 2005.26.840.4400	2005.24.830.4400.P 2005.25.830.4400.P 2005.26.830.4400.P	2005.24.840.4400.P 2005.25.840.4400.P 2005.26.840.4400.P	1126mm
	<b>5500lm</b> 36.2W	Non dimmable 1-10V dimmable Touch/DALI dim.	2005.24.830.5500 2005.25.830.5500 2005.26.830.5500	2005.24.840.5500 2005.25.840.5500 2005.26.840.5500	2005.24.830.5500.P 2005.25.830.5500.P 2005.26.830.5500.P	2005.24.840.5500.P 2005.25.840.5500.P 2005.26.840.5500.P	1426mm
	<b>6600lm</b> 43.5W	Non dimmable 1-10V dimmable Touch/DALI dim.	2005.24.830.6600 2005.25.830.6600 2005.26.830.6600	2005.24.840.6600 2005.25.840.6600 2005.26.840.6600	2005.24.830.6600.P 2005.25.830.6600.P 2005.26.830.6600.P	2005.24.840.6600.P 2005.25.840.6600.P 2005.26.840.6600.P	1689mm

On request: 5000K Ra80 - 3000K Ra90 - 4000K Ra90

## Down module

Philips Fortimo LED Line High Flux LV 2000lm/ft\*

			3000K Ra80 Opal diffuser	4000K Ra80 Opal diffuser	3000K Ra80 Prismatic diffuser	4000K Ra80 Prismatic diffuser	Length
 	<b>4000lm</b> 28W	Non dimmable 1-10V dimmable Touch/DALI dim.	2005.24.830.4000 2005.25.830.4000 2005.26.830.4000	2005.24.840.4000 2005.25.840.4000 2005.26.840.4000	2005.24.830.4000.P 2005.25.830.4000.P 2005.26.830.4000.P	2005.24.840.4000.P 2005.25.840.4000.P 2005.26.840.4000.P	563mm
	<b>8000lm</b> 56W	Non dimmable 1-10V dimmable Touch/DALI dim.	2005.24.830.8000 2005.25.830.8000 2005.26.830.8000	2005.24.840.8000 2005.25.840.8000 2005.26.840.8000	2005.24.830.8000.P 2005.25.830.8000.P 2005.26.830.8000.P	2005.24.840.8000.P 2005.25.840.8000.P 2005.26.840.8000.P	1126mm

On request: 3500K Ra80 - 5000K Ra80

<sup>(1)</sup> The luminous flux given on this page refers to module in 4000K - Ra80.  
For exact specifications see table on page 204